



MONTHLY  
BULLETIN

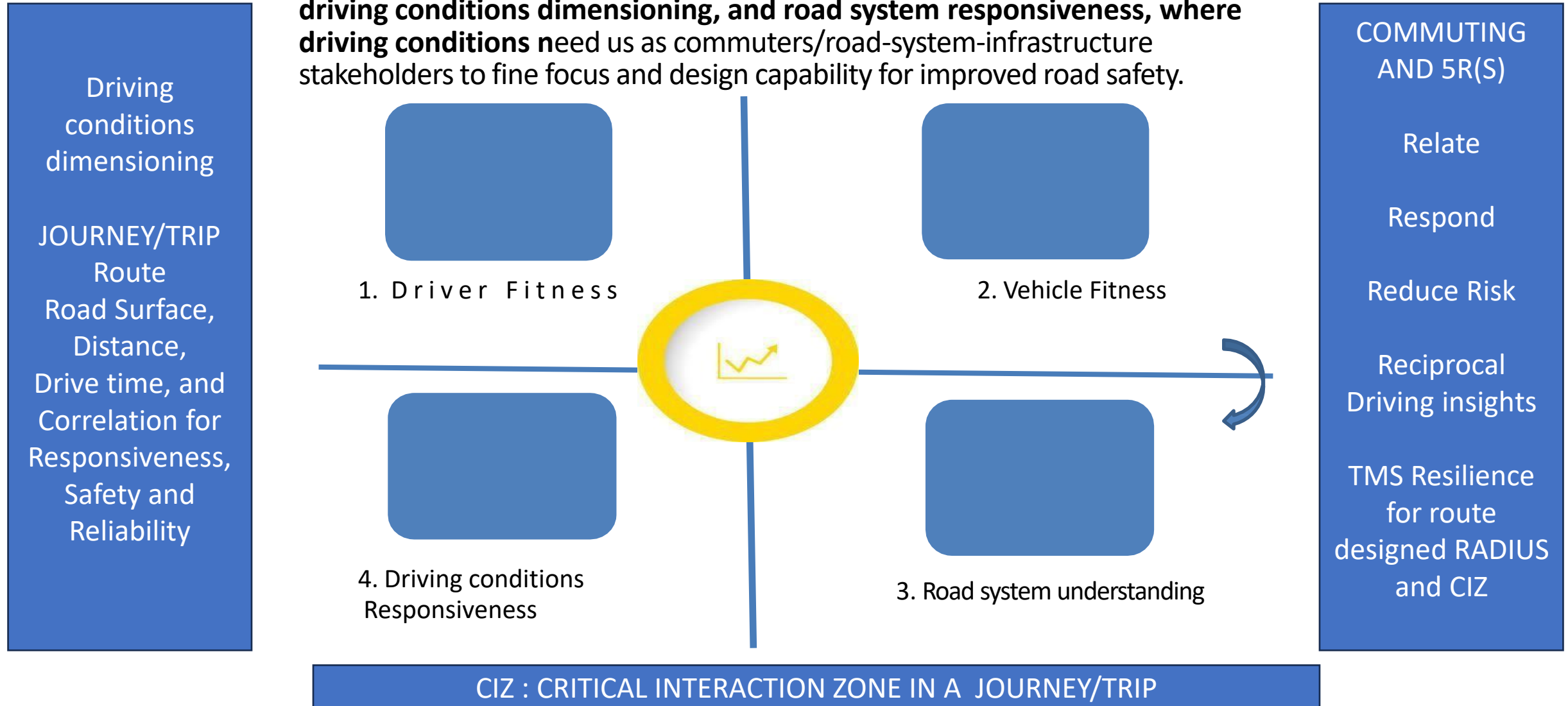
Road Safety / Support is a  
mainline National Safety  
and Social Responsibility

## **DASHBOARDING ROAD SAFETY / SUPPORT BY VENKATRAM K S, AOEC 2026-2027**

NOV  
2026

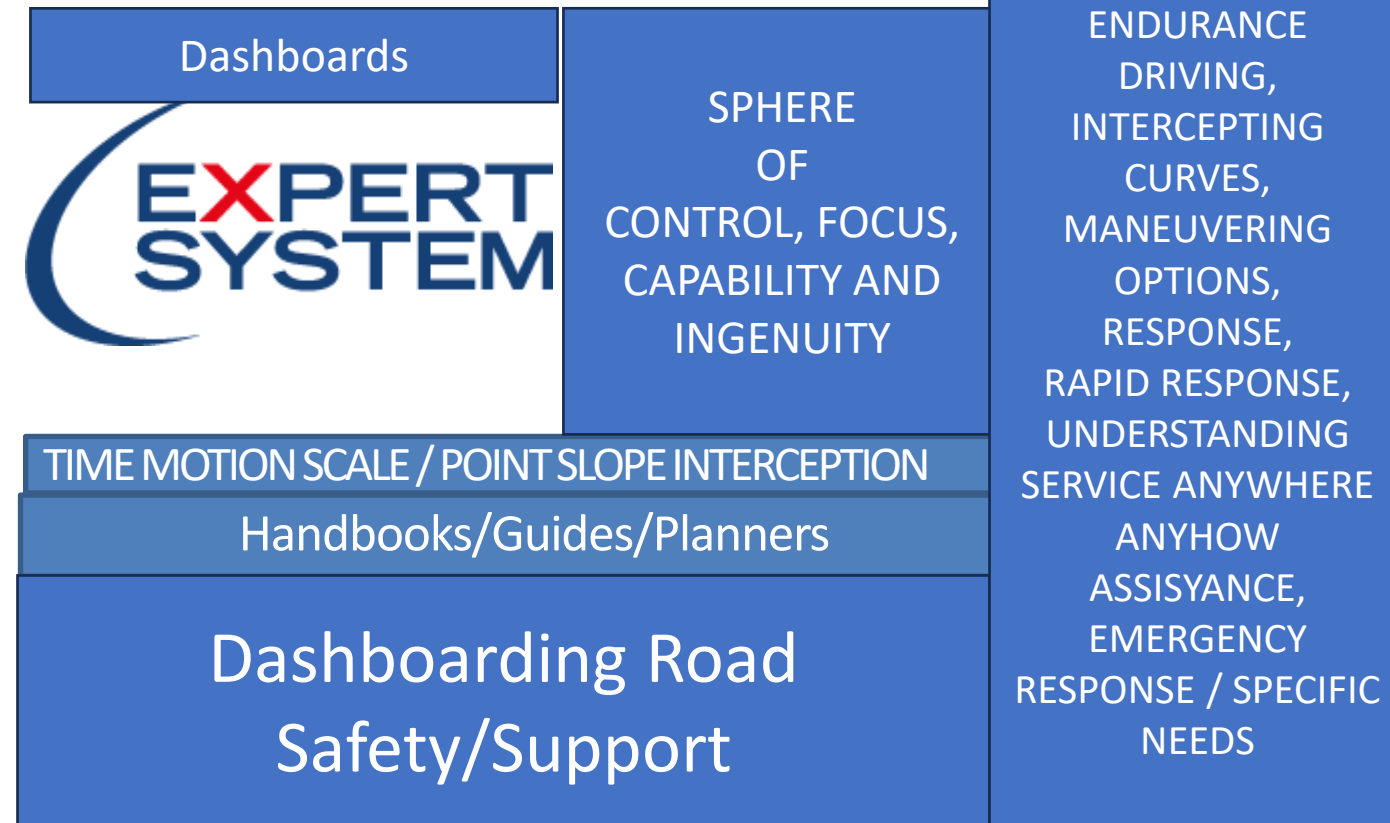
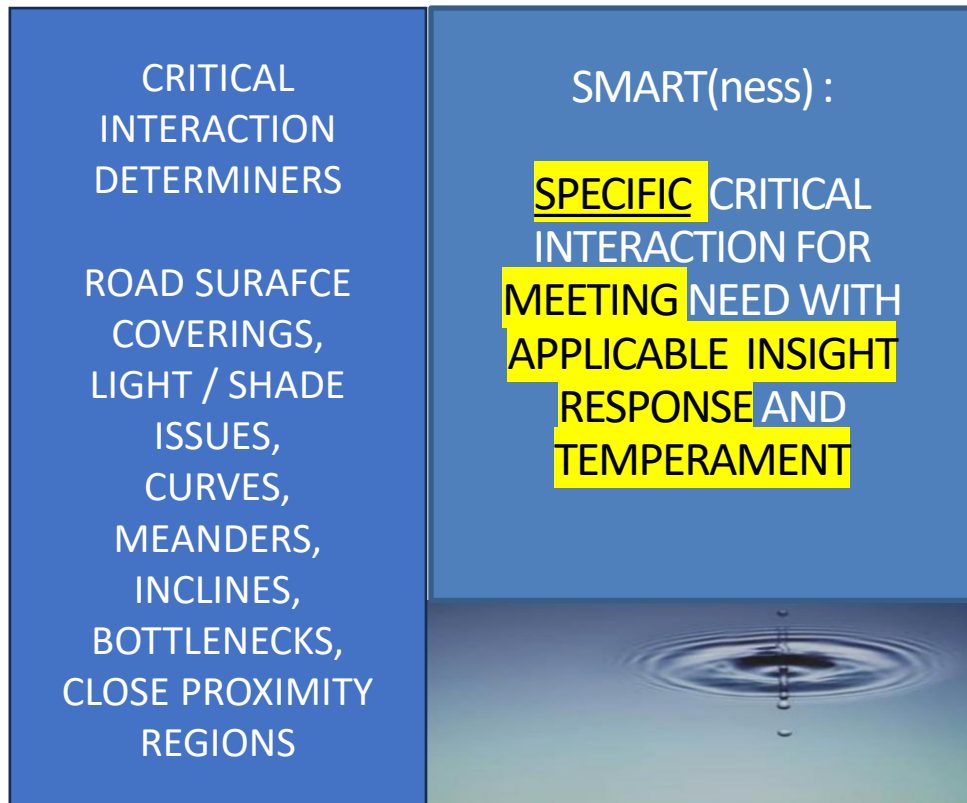
# Dashboarding Road Safety/Support

- AOEC finds that safety while commuting on road, depends upon the automobile manufacturer's quality assurance, driver fitness, vehicle fitness, driving conditions dimensioning, and road system responsiveness, where **driving conditions** need us as commuters/road-system-infrastructure stakeholders to fine focus and design capability for improved road safety.



# Dashboarding Road Safety/Support

- AOEC finds that instrumentally, Dashboarding Road Safety / Support (DRSS) projects must
- define a TMS workflow for accentuating
  1. Driver Fitness
  2. Vehicle Fitness
  3. Road system understanding
  4. Alpha Assistance
  5. 5R(s) SMART(ness) for a safer journey



# Dashboarding Road Safety/Support

- DRSS SMART(ness) for a journey/trip and virtual POINT SLOPE INTERCEPTION can make it simpler to identify the tangible correlation between driving conditions dimensioning of a route/road system/road with a DRSS Workflow to help and improve safer commuting
- This DRSS Workflow plus NSSR RS programme teamwork can
  - Record-or-review,
  - Relate,
  - Reduce risk,
  - Reciprocate response and
  - Design Resilience for any journey/trip and its dimensions like the
    - road surface,
    - distance,
    - drive time,
  - commute reliably factors, where there is universal or brand specific service centre-assessable part-lifetime mitigation, condition monitoring, ttrafficable fault tolerance/preventive and corrective action, where this DRSS Workflow development can help a NSSR participant define/use a NSSR RS index for a journey/trip/TMS radius, where the index can be simply (1), (2), (3), (4) or combinations of them

The NSSR project recommends the use of different assistants to help commuters improve their experience

# Dashboarding Road Safety/Support

- **(1) NRRS-I1:** = where this workflow will need to address History of interaction & Foreseeable needs and 5R(s)
- **(2) NRRS- I2:** = this workflow will need to address Critical Interaction Zone needs and 5R(s)
- **(3) NRRS- I3:** this workflow will need to address Road/Route dynamics and 5R(s)
- **(4 NRRS- I4:** this workflow will need to address **Advanced safety needs and 5R(s)**
- (like air quality, unregulated climate intolerance, temperature/humidity, road system or road or terrain safety, with more than an expected driving style for commuting with safety, reliability & timing and with more than programmed gear changes, or braking or drive distribution between the front and rear wheels as expected in 4WD modes)
- The bulletin looks at the different assistants that can help a commuter's 5R(s). The editions that follow will delve into details of each of them to help a commuter/stakeholder ramp up scores in a dashboard

# Dashboarding Road Safety/Support

- The DRSS Data Analysis Channel Building for an **automobile manufacturer's quality assurance, driver fitness, vehicle fitness, driving conditions dimensioning, and road system responsiveness** for deteriorating or changing driving conditions dimensioning of the needed SMART(ness for safer commuting will need to
- **1. Improve Sensitization and Awareness for Road Safety**
- **2. Develop issue/feedback/data channelization for safer commuting**
- **3. Provide handbooks/guides/planners for such planning/ incorporation**
- **4. Promote quality for road safety and infrastructure via NSSR guided methodologies like the training programmes/monthly bulletins & quizzes/dashboarding of experience or incidences**

DRSS Lifecycle and  
NSSR RS Teamwork for  
the DRSS Workflows

DRSS Data Analytics  
and  
Drive Performance  
SMART(ness)



# Road safety and Accountability Dashboard for the Year 2026

- ☐ Certificate of Excellence YES / NO / NOT SATISFACTORY
- ☐ Traffic issues or incidences YES / NO / NOT SATISFACTORY
- ☐ Compliance with FMVSS standards YES / NO / NOT SATISFACTORY
- ☐ Onboarding of NSSR Road Safety objectives YES / NO / NOT SATISFACTORY
- ☐ Upgradability of NSSR Road Infrastructure objectives YES / NO / NOT SATISFACTORY
- ☐ Traffic Engineering Assets planning YES / NO / NOT SATISFACTORY
- ☐ Traffic Engineering Defects Liability YES / NO / NOT SATISFACTORY
- ☐ Improved on-road assistance YES / NO / NOT SATISFACTORY
- ☐ Cost of Quality /Cost of Poor-Quality Project Assistance YES / NO / NOT SATISFACTORY
- ☐ Complexity for Road Safety and Accountability YES / NO / NOT SATISFACTORY



# Road safety and Accountability Dashboard for the Year/Season 1

- ☐ Certificate of Excellence YES / NO / NOT SATISFACTORY
- ☐ Traffic issues or incidences YES / NO / NOT SATISFACTORY
- ☐ Compliance with FMVSS standards YES / NO / NOT SATISFACTORY
- ☐ Onboarding of NSSR Road Safety objectives YES / NO / NOT SATISFACTORY
- ☐ Upgradability of NSSR Road Infrastructure objectives YES / NO / NOT SATISFACTORY
- ☐ Traffic Engineering Assets planning YES / NO / NOT SATISFACTORY
- ☐ Traffic Engineering Defects Liability YES / NO / NOT SATISFACTORY
- ☐ Improved on-road assistance YES / NO / NOT SATISFACTORY
- ☐ Cost of Quality /Cost of Poor-Quality Project Assistance YES / NO / NOT SATISFACTORY
- ☐ Complexity for Road Safety and Accountability YES / NO / NOT SATISFACTORY





# Road safety and Accountability Dashboard for the Year/Season 2

- ☐ Certificate of Excellence YES / NO / NOT SATISFACTORY
- ☐ Traffic issues or incidences YES / NO / NOT SATISFACTORY
- ☐ Compliance with FMVSS standards YES / NO / NOT SATISFACTORY
- ☐ Onboarding of NSSR Road Safety objectives YES / NO / NOT SATISFACTORY
- ☐ Upgradability of NSSR Road Infrastructure objectives YES / NO / NOT SATISFACTORY
- ☐ Traffic Engineering Assets planning YES / NO / NOT SATISFACTORY
- ☐ Traffic Engineering Defects Liability YES / NO / NOT SATISFACTORY
- ☐ Improved on-road assistance YES / NO / NOT SATISFACTORY
- ☐ Cost of Quality /Cost of Poor-Quality Project Assistance YES / NO / NOT SATISFACTORY
- ☐ Complexity for Road Safety and Accountability YES / NO / NOT SATISFACTORY



# Road safety and Accountability Dashboard for the Year/Season 3

- ☐ Certificate of Excellence YES / NO / NOT SATISFACTORY
- ☐ Traffic issues or incidences YES / NO / NOT SATISFACTORY
- ☐ Compliance with FMVSS standards YES / NO / NOT SATISFACTORY
- ☐ Onboarding of NSSR Road Safety objectives YES / NO / NOT SATISFACTORY
- ☐ Upgradability of NSSR Road Infrastructure objectives YES / NO / NOT SATISFACTORY
- ☐ Traffic Engineering Assets planning YES / NO / NOT SATISFACTORY
- ☐ Traffic Engineering Defects Liability YES / NO / NOT SATISFACTORY
- ☐ Improved on-road assistance YES / NO / NOT SATISFACTORY
- ☐ Cost of Quality /Cost of Poor-Quality Project Assistance YES / NO / NOT SATISFACTORY
- ☐ Complexity for Road Safety and Accountability YES / NO / NOT SATISFACTORY

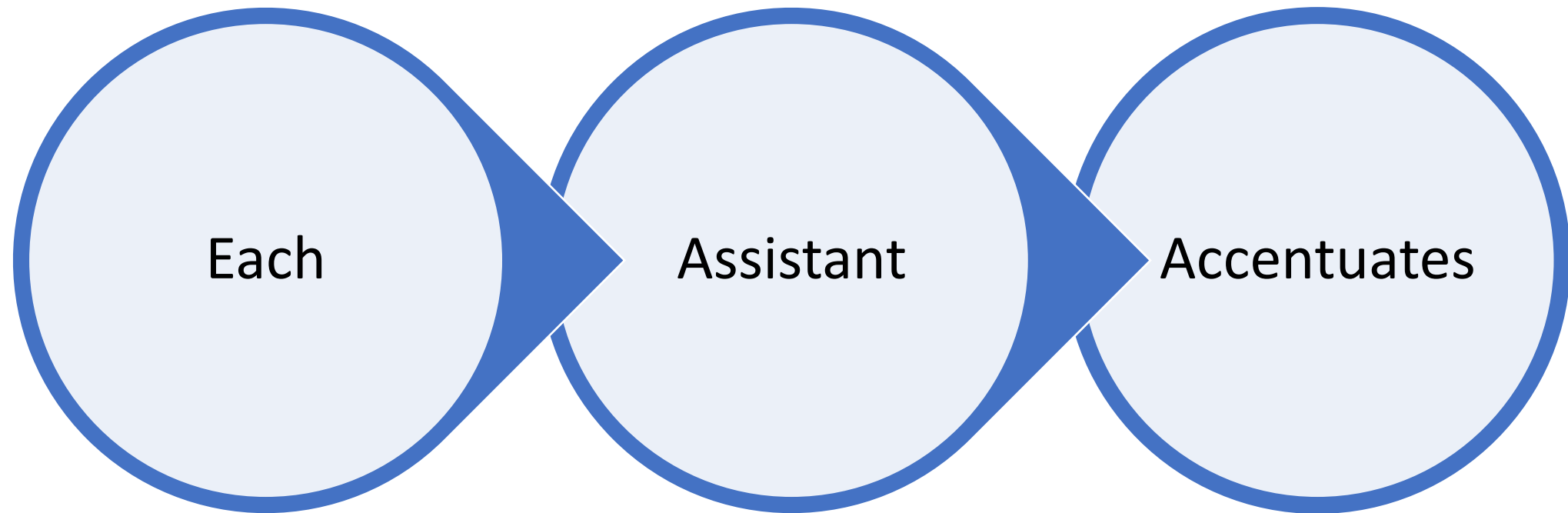


# Road safety and Accountability Dashboard for the Year/Season 4

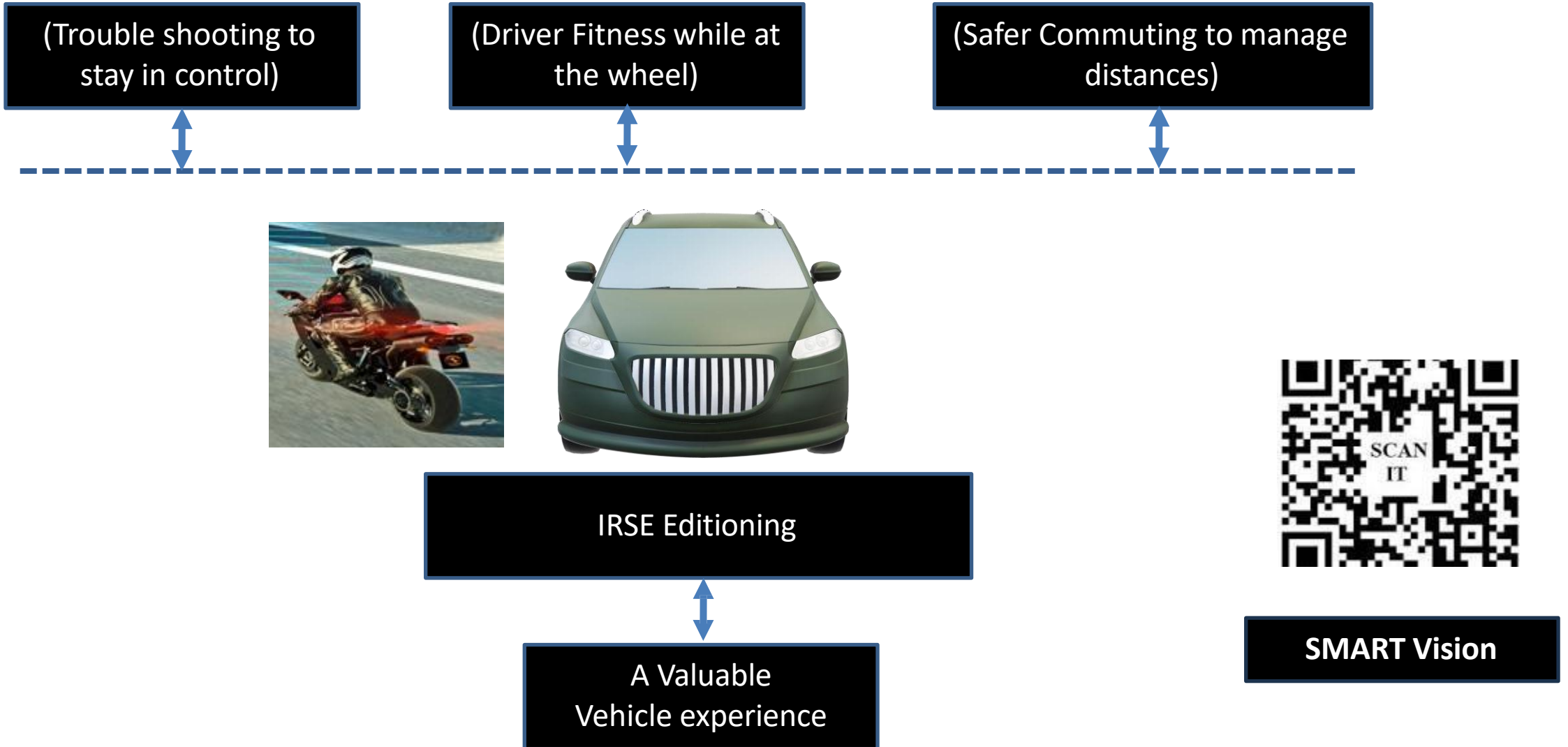
- ☐ Certificate of Excellence YES / NO / NOT SATISFACTORY
- ☐ Traffic issues or incidences YES / NO / NOT SATISFACTORY
- ☐ Compliance with FMVSS standards YES / NO / NOT SATISFACTORY
- ☐ Onboarding of NSSR Road Safety objectives YES / NO / NOT SATISFACTORY
- ☐ Upgradability of NSSR Road Infrastructure objectives YES / NO / NOT SATISFACTORY
- ☐ Traffic Engineering Assets planning YES / NO / NOT SATISFACTORY
- ☐ Traffic Engineering Defects Liability YES / NO / NOT SATISFACTORY
- ☐ Improved on-road assistance YES / NO / NOT SATISFACTORY
- ☐ Cost of Quality /Cost of Poor-Quality Project Assistance YES / NO / NOT SATISFACTORY
- ☐ Complexity for Road Safety and Accountability YES / NO / NOT SATISFACTORY



## DRSS Assistants – Safety Systems



# YOUR VEHICLE DEMYSTIFIED



# ABS Performance

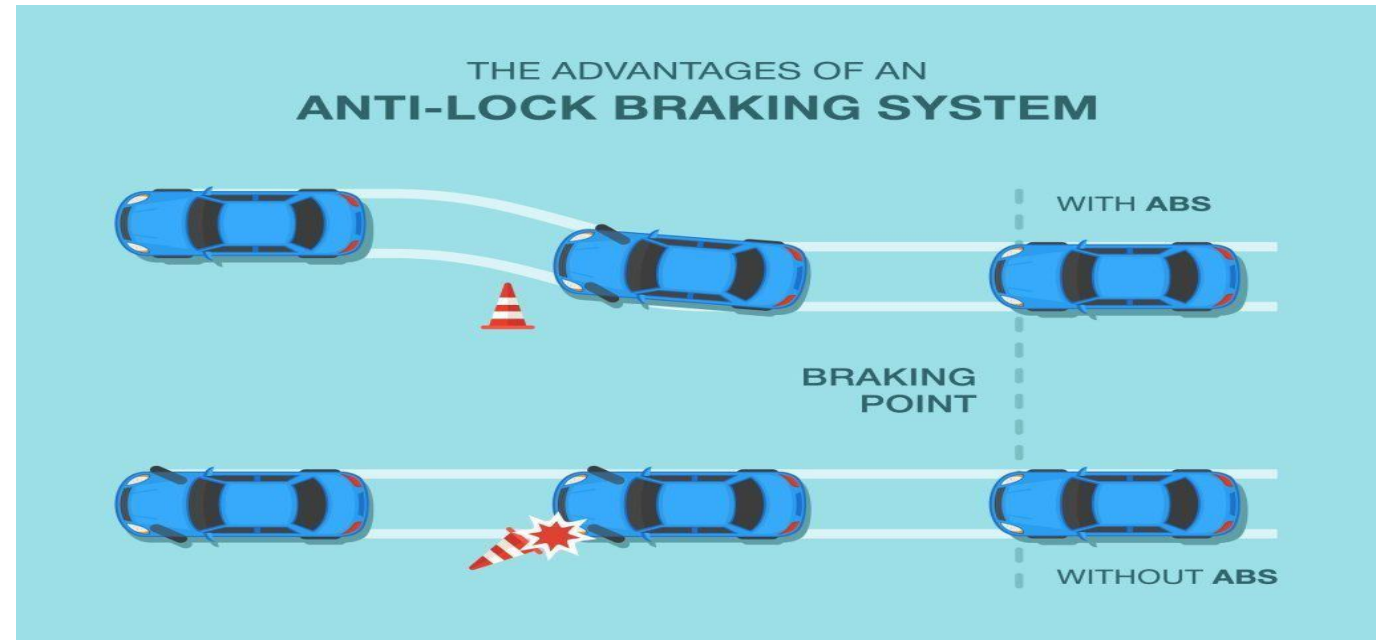
ABS stands for Anti-lock braking system. It is incorporated in two wheelers, four wheelers, commercial vehicles.

## ABS incorporated Vehicle Experience

- ✓ ABS helps safe and effective braking
- ✓ ABS improves control over steering during braking
- ✓ ABS improves control over vehicle during cornering
- ✓ ABS improves tyre life
- ✓ ABS reduces fuel consumption



SMART Vision



# ARAS Performance

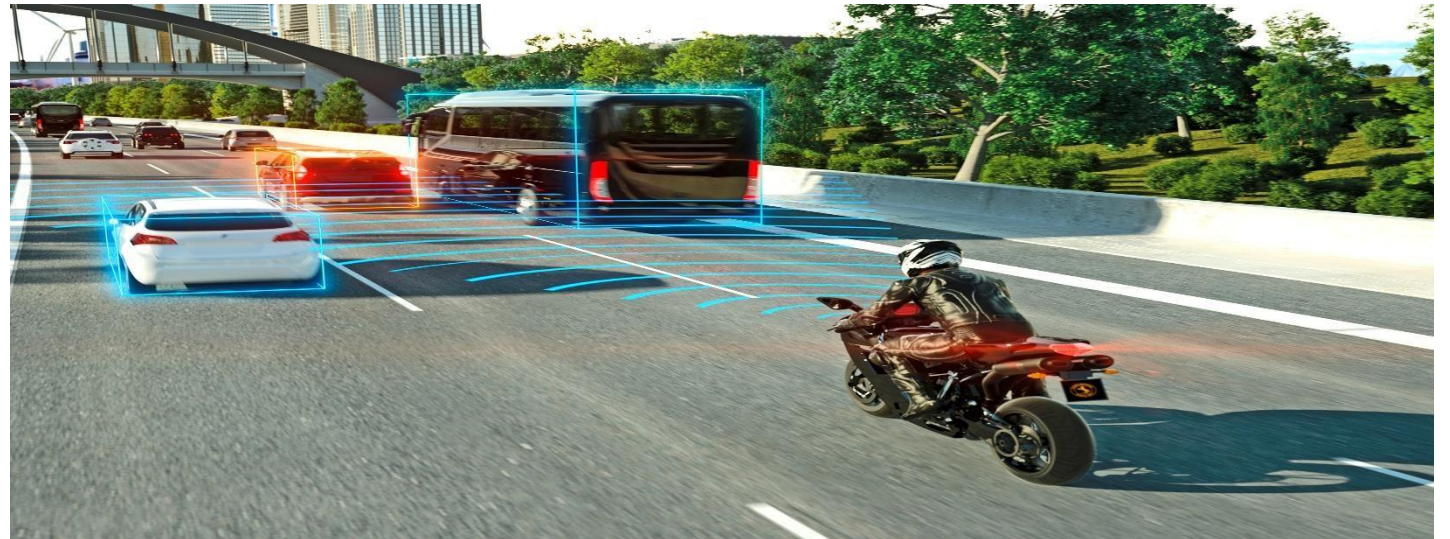
**Advanced Rider Assistance Systems (ARAS) is often incorporated in two wheelers**

## **ARAS Vehicle Experience**

- ✓ ARAS improves safety and enhances rider assistance
- ✓ ARAS improves riding control in different situations
- ✓ ARAS enables alerts for Blind spot detection (BSD)
- ✓ ARAS enables Lane change assistance (LCA) at higher relative speeds
- ✓ ARAS enables high frequency hazard lights for Rear end collision warning (RCW)
- ✓ ARAS delivers effective Forward collision warning (FCW)
- ✓ ARAS enables comfortable, safe distance riding and Adaptive Cruise Control (ACC)



**SMART Vision**





# EBA Performance

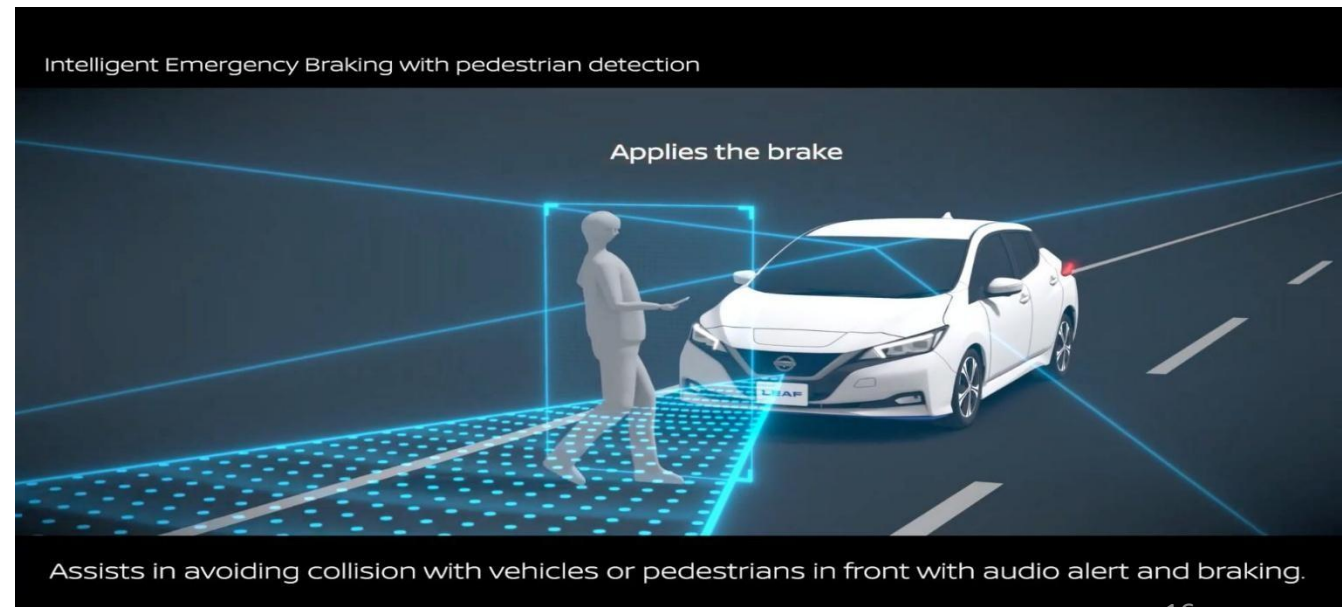
Emergency Braking Assist (ARAS) is often incorporated in two wheelers/four wheelers and CMV(s)

## EBA Vehicle Experience

- ✓ EBA improves safety and control in driving
- ✓ EBA assists braking on collision risk
- ✓ EBA improves safety in sudden and forceful braking
- ✓ EBA reduces stopping distance
- ✓ EBA works effectively in cross traffic situations
- ✓ EBA assists and improves pedestrian safety



SMART Vision





# TPMS Performance

**Tyre Pressure Monitoring System is often incorporated in two wheelers, four wheelers and commercial vehicles**

## **TPMS Vehicle Experience**

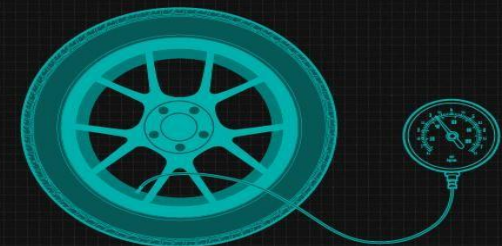
- ✓ TPMS improves handling and stability in driving
- ✓ TPMS alerts when tyre pressure is low
- ✓ TPMS improves safety by reducing the wear of tyre or incidences of a blow-out / punctured tyre
- ✓ TPMS improves fuel efficiency
- ✓ TPMS reduces hydroplaning when an under-inflated tyre loses contact with the road surface in wet conditions
- ✓ TPMS ensures proper stopping distance

**SMART Vision**



## **HOW TO CHECK TIRE PRESSURE**

1. Start with cold tires
2. Check the manufacturer's recommended PSI
3. Write down each tire's PSI
4. Check tire pressure with your gauge
5. Fill to recommended PSI
6. Repeat every month



# AHO Performance

Automatic Headlamp on is often incorporated in two wheelers, four wheelers and commercial vehicles.

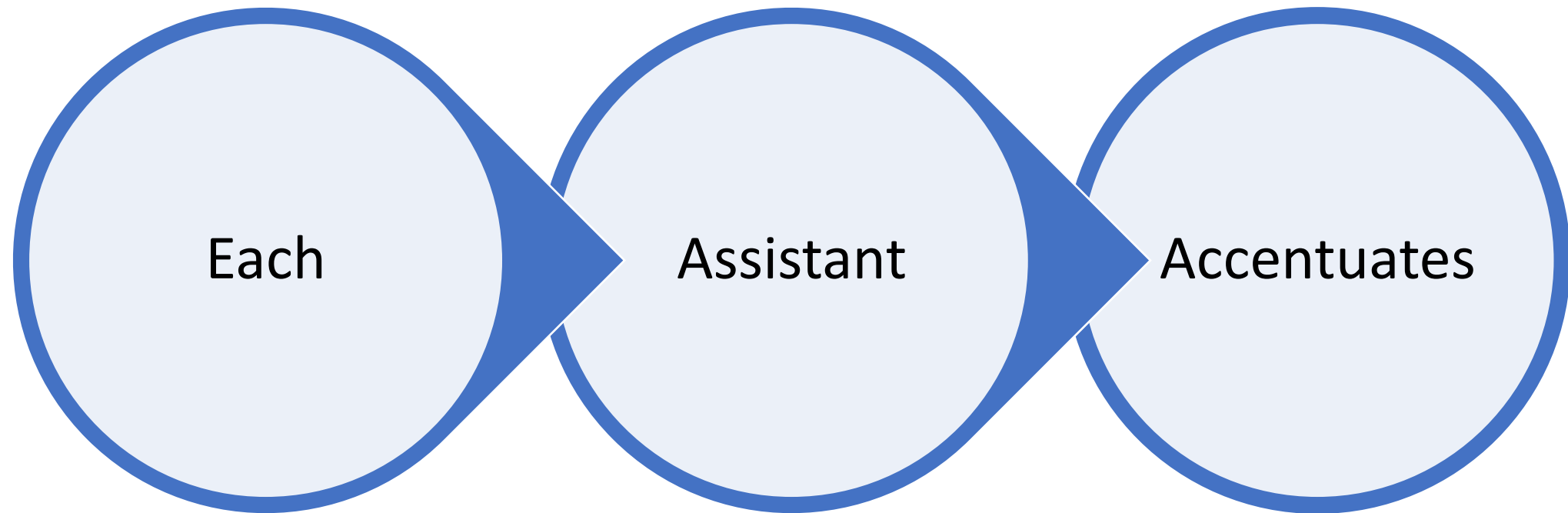
## AHO Vehicle Experience

- [ ] AHO improves safety and visibility in driving
- [ ] AHO turns on automatically when the engine is started
- [ ] AHO turns off only when the engine stops
- [ ] AHO improves visibility at night, in rain, or in fog or in dusty conditions
- [ ] AHO improves rear view mirror visibility of 2 wheeler and its vehicle information
- [ ] AHO does not drain the battery when ON

SMART Vision



## DRSS Assistants – Safety Systems



Quiz

DRSS  
Assistants –  
Safety  
Systems

