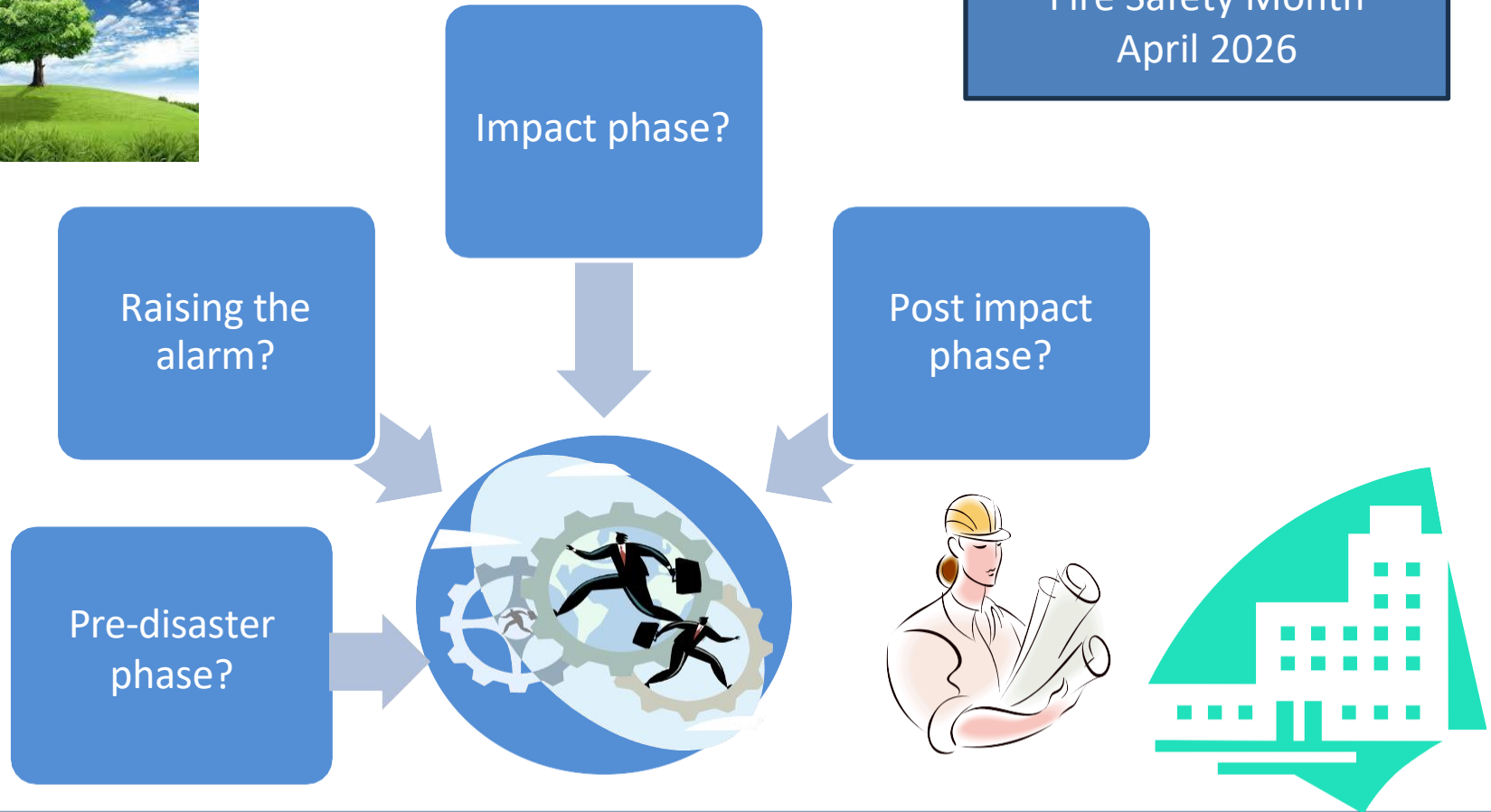


Towards Disaster Management Readiness



Fire Safety Month
April 2026



Fire Protection and Safety – Venkatram K S Gap Analysis 2026-2027

Key considerations

A **Fire mitigation and protection plan** helps protect people and their environment from destructive fire, by the following steps:

1. Analysis of fire hazards for an agricultural site or building
2. Suitable mitigation of fire damage by forest fire containment, proper design, construction, arrangement, and use of buildings materials, structures, industrial processes, and transportation systems
3. Design, installation and maintenance of fire detection and suppression and communication systems
4. Procedures to conduct post/fire investigation and analysis, to generate information that can be used for future mitigation and protection

Fire Mitigation and Protection generally involves the use of the **Gaia hypothesis**

And design of systems for

1. Fire sprinklers
2. Standpipes or emergency water supply points which are installed outdoors or at strategic locations to dispense water in areas which do not have a running water supply
3. Fire detection and alarm
4. Special hazards systems, such as clean agents, water mist, or CO² (all of which are agents used to extinguish a fire)
5. Fire containment
6. Smoke management

Possible solution for climate change related forest fire containment

By,

K.S.Venkatram

AOEC & SSHGIEC, 2015-2018

Revisited in March 2026

Key considerations

An urban agriculturist or close-by-sites community based agriculturist can mitigate hazards by planning for clustered services for forest fire containment. Natural or accidental forest fires are known to occur when a location heats up and the trees, plants, bushes, branches, leaves at that location are all known to dry up and become more vulnerable to catching fire.

The clustered services can help prevent or prepare for incidence and mitigate hazards by implementing the following:

- a. Investment policy or Readiness investment policy** (that uses the assistance of a company, agency, governmental or institutional body) to request for observation plane services, to inspect sites or locations for forest fire incidence (on alarms being raised). The policy can also include availability of (water/special agents based) fire extinguisher systems via in-flight services
- b. Planting flags in and around areas prone to forest fires** (to help forewarn aerially and execute immediate action)

Key considerations

c. Planting dark & light daisies in prone areas to detect possibility of climate change leading to forest fires

According to the Gaia hypothesis, daisy worlds of 2 varieties, light and dark daisies can be grown in a site or piece of land under similar conditions. These daisies will grow according to their ability to keep their temperatures at / around 20 degrees centigrade.

As the sun grows brighter or climate change sets in (like increased heat effect) more and more light daisies appear until they cover the land surface allotted for this mitigation strategy.

The light daisies also reduce the warming experience to a large extent.

The vision being that tree cover, forest areas, agricultural sites, green habitats will experience more of a warming experience when the temperature rises, so this strategy can help detect risks, threats and prone to forest fire scenarios.

Key considerations

c. Planting dark & light daisies in prone areas

Method to grow: Seeds, Stem cutting

Proof of concept (variety)

For Light varieties: Light pink Gerbera variety

For Dark varieties: Dark pink Gerbera variety

Gaia hypothesis illustration



Checklists for fire mitigation and protection

By,

K.S.Venkatram

AOEC & SSHGIEC, 2015-2018

Revisited in March 2026

Key considerations

When it comes to **fire mitigation and protection**, there are specific norms and guidelines that need to be followed, these could include:

- 1. Involvement of the fire protection engineering department in the early stages of site and/or building design and construction.** The benefits of involving a fire protection engineer at this stage include:
 - a. Greater design flexibility
 - b. Innovation in design, construction, and materials
 - c. Equal or better fire safety
 - d. Maximization of cost/benefit
 - e. Better damage control

- 2. Adopting strategies for achieving "Whole Site and/or Building" Design Objectives (called integrated and high-performance building design and construction).**
 - a. This is largely practiced through the application of prescriptive codes and standards.

Key considerations

Some of the prescriptive codes and standards are as follows:

1. International Fire Code
 2. [Standard for the Installation of Sprinkler Systems](#)
 3. [Fire Alarm Code](#)
 4. [Life Safety Code, etc](#)
- b. “High Performance-based design” looks at fire safety from a "whole site and/or building" perspective, where focus is given to life safety, property protection, mission continuity, forest fire containment and environmental protection.

“High Performance-based design” is an engineering approach to fire protection design based on (1) the Gaia hypothesis, (2) established fire safety goals and objectives, (3) analysis of fire scenarios, and (4) quantitative assessment of design alternatives against the fire safety goals and objectives using engineering tools, methodologies, and performance criteria.

Key considerations

From the site and/or building design and construction point of view, the plan for fire mitigation and protection will include designing of systems for

1. Gaia hypothesis based forest fire containment
2. Structural fire resistance
3. Fire rated construction
4. Layout planning and means of egress (or exit)

From a complete end-to-end solutions perspective, it involves:

- a. Strategic planting and growing of dark & light daisies
- b. Strategic placement of fire extinguishers and sand buckets
- c. Coordination of sprinkler system zoning with fire alarm system zoning
- d. Coordination of sprinkler system water flow and tamper switches with the fire alarm system
- e. Coordination of fire alarm and egress system with site / building security
- f. Coordination of smoke control systems with detection and HVAC system designs
- g. Coordination of fire separations with architectural designs
- h. Coordination of penetrations of fire rated assemblies with mechanical and electrical designs (e.g., piping, ductwork, and wiring penetrations)
- i. Coordination of means of egress with architectural designs



Fire Prevention Month

BE ALERT, DO NOT GET HURT

About the KSFES



Karnataka
State

Fire &
Emergency

Services

About the KSFES organizational flow

- **KSFES Operational flow of command/rescue services**

- From the operational point of view, the Bengaluru City has been given under the control of two Chief Fire Officers i.e
- Chief Fire Officer, Bengaluru East and
- Chief Fire Officer, Bengaluru West.

- Bengaluru City is further divided in to 4 Regions with a specially assigned Regional Fire Officer:
 - 1.Bengaluru-East Range
 - 2.Bengaluru-West Range,
 - 3.Bengaluru-North Range and
 - 4.Bengaluru-South Range.

- Under each Regional Fire Officer, 2-3 District Fire Officers function.
- These District Fire Officers are the drawing and disbursing officers of respective districts.

KSFES inspects or assesses buildings & plots and issues then a NOC if their construction and in-situ environment adheres to regulations and defined guidelines

About the KSFES organizational flow

- KSFES Operational flow of command/rescue services

- From the operational point of view, the District Fire Officers are also supervisory officers of the fire stations, falling under their jurisdiction.

- Under each District Fire Officer, 3-4 Fire Station Officers are known to be working.

- Fire Station Officers are the unit officers, known to be directly looking after a Fire Station.

- The Fire Station Officers are assisted by Assistant Fire Station Officers.

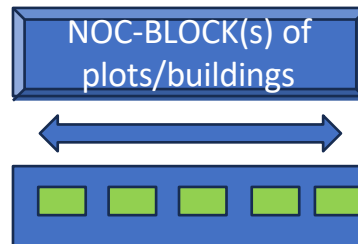
- Each Fire Station has

- Leading Firemen,

- Driver Mechanics,

- Fireman Drivers and

- Firemen who are the first responders.



KSFES expects
Technical
Persons to
register and
submit details
for any NOC of a
building or plot

Technical
Persons can
include

- ☐ Architect
- ☐ Structural Engineer
- ☐ Electrical Engineer
- ☐ PH Engineer
- ☐ Site Supervisor
- ☐ Civil Engineer
- ☐ Contractor

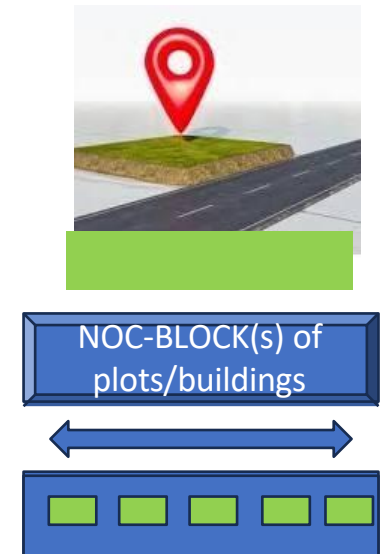
Safer Fire & Emergency Services

- **Problem description: beyond NOC issual for buildings and plots**
- As emerging complexities will grow, our National Safety Social Responsibility Theme Development Programmes will need to develop more hazards warning systems or imagery services to achieve a concept called Call-to-attention-mitigation of risks known to occur daily or incidentally due to road systems. These proposed safer commuting viewpoints can help departments such as the KSFES plan Fire and Emergency Services Actuation (FESA)
- The KSFES associated Safer Commuting solution will need to define the value stream mapping for this Call to attention mitigation of road systems risks with knowledge / key opinion or Call-to-attention enabling Road System PI(s), KPI(s) or PI independent FESA First Views for road systems that need to be used for their services or drills.
- FESA driving conditions can be designed by OTA themes such as NOC Block(s) Numbered Focus (NOC-BNF) Analytics, or FESA Showcase/Drill Numbered Focus (FESA-SWNF) Analytics, or FESA SAR/Docked View Numbered Focus (FESA-DVNF) Analytics, where SAR stands for Search and Rescue
- Further more, KSFES vehicles will need OTA packages for connected driving conditions. The Safer Commuting solution can be incorporated via OTA themes, that are developed for (1) an evaluated Road System/Route or for (2) a Commuting theme like the LOD/LOS or Map View enabled Call-to-attention-mitigation of risks for severe driving conditions for FESA where OTA stands for Over The Air networking, LOD stands for Line of Distant Vision, LOS stands for Line of Sight, Map View stands for Google Maps enabled Views.

Safer Fire & Emergency Services

Known dynamics influencing the FESA insightful Vision:

- ❑ Problems due to older road systems/ road infrastructure
- ❑ Problems due to lack of insightful / unified NOC effort by building/site/plot owners/associations along the road systems known to be used in FESA services
- ❑ Problems due to lack of NSSR Theme based landscaping of roads/road systems/routes known to be used in FESA services
- ❑ Problems due to lack of people interest for Essential Adherence for Guidance/Control/ Accountability for NOC efforts or for NSSR Theme landscaping of buildings/plots/sites/ Public services Infrastructure on roads/road systems/routes known to be used in FESA services

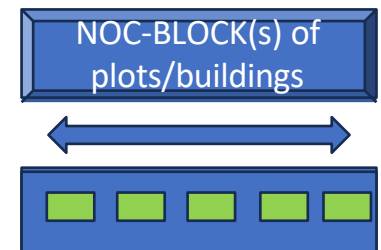
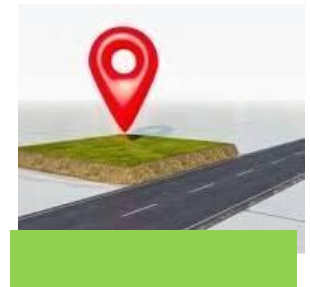


Safer Fire & Emergency Services

Strategic Planning / Differentiation strategy for the FESA insightful Vision:

Designing insightful analysis based on

- (Chief Fire Officer Associated) Zones
- (Regional Fire Officer Associated) Regions
- (Fire Station Associated) **Strategic-Tactical-Operational intelligence**
- (soon to be GBA/BBMP/BBMP Traffic Engineering/BDA Associated) Wards
- (Ward Associated) Buildings/Road systems/Routes
- (FESA Associated) or (NSSR Theme Associated) Strategic-Tactical-Operational intelligence Infrastructure and/or Data Management



Safer Fire & Emergency Services

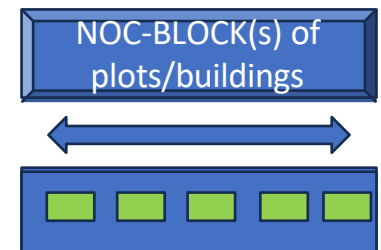
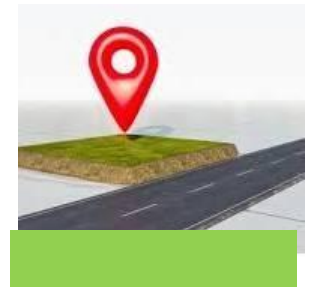
Solution deployment strategy for the FESA insightful Vision:

Stages of deployment based on

- (Chief Fire Officer Associated) Zones
- (Regional Fire Officer Associated) Regions
- (Fire Station Associated) Strategic-Tactical-Operational intelligence
- (soon to be GBA/BBMP/BBMP Traffic Engineering/BDA Associated) Wards
- (Ward Associated) Buildings/Road systems/Routes
- (FESA Associated) or (NSSR Theme Associated) Strategic-Tactical-Operational intelligence

Infrastructure and/or Data Management

- (FESA Associated) or (NSSR Theme Associated) Focus Analytics
- (FESA Associated) or (NSSR Theme Associated) NOC Blocks (of Assets, Liabilities, Call to attention (C2A) viewpoints)
- (FESA Associated) or (NSSR Theme Associated) Services for incidences / problems





Fire Prevention Month

BE ALERT, DO NOT GET HURT

NOC related details for a building

NOC related details for a building

KSFES - Portal Application

The Application for No Objection Certificate page provides the user with the following information:

- **Building Type as per NBC:** Select the building type as per NBC.
- **Building Usage Purpose:** Select the purpose of building usage.
- **Application for extension to an existing building or new proposal?:** Specifies whether the application is for extension to an existing building or new proposal.
 - **Extension to existing building:** Choose this option, if the application is for extension to an existing building.
 - **New Proposal:** Choose this option, if the application is for new proposal.
- **If Extension to an existing building, provide details for existing building:** If Extension to an existing building, enter the details as follows. This option will be available only if you have chosen the **Extension to existing building** option.
 - **Height (m):** Enter the height of the existing building in meters.
 - **No. of Floors:** Enter the number of floors
 - **Total Built up Area (sqm):** Enter the total built up area in square meter.
- **Whether Sanction obtained from Local Authority (BBMP,BDA etc) to construct the building?:** Choose the option which specifies whether the sanction is obtained from local authority to construct the building. This option will be available only if you have chosen the **Extension to existing building** option.

NOC Blocks of Buildings with Strategic-Tactical-Operational intelligence Infrastructure and/or Data Management influencers

NOC related details for a building

- **Site Details:** Here user can enter the details of the site/plot.
 - **Survey Number:** Enter the survey number of the plot.
 - **Survey Aksharabaga:** Enter the survey aksharabaga.
 - **Hissa No.:** Enter the Hissa number of the plot.
 - **Land Extent:** Enter the extended land use.
 - **Unit of Measurement:** Select the unit in which the plot is to be measured.
 - **Taluk:** Enter the taluk in which the project is proposed.
 - **Hobli:** Enter the hobli to which the plot belongs.
 - **Village:** Enter the name of the village.
 - **Ward Number:** Enter the number of the ward.
 - **Street:** Enter the name of the street.
 - **Pincode:** Enter the pincode of the city.
 - **PID (If Available):** Enter the PID code if available.
 - **Add:** Click on this button to add the site/plot details entered.
- **Location Coordinates of the site:** Here user can provide the latitude and longitude of the site.
 - **Latitude:** Enter the latitude of the site.
 - **Longitude:** Enter the longitude of the site.

NOC Blocks of
Buildings with
Strategic-Tactical-
Operational
intelligence
Infrastructure
and/or Data
Management
influencers

NOC related details for a building

KSFES - Portal Application

- **Chakbandi:** Specifies the chakbandi details of the plot.
 - **North:** Enter the name of the person who owns the north side of the land.
 - **South:** Enter the name of the person who owns the south side of the land.
 - **West:** Enter the name of the person who owns the west side of the plot.
 - **East:** Enter the name of the person who owns the east side of the plot.
 - **Add:** Click on this button to add the chakbandi details entered.
- **Entry Road Type:** Select the type of entry road to the site.
- **Entry Road Name/Identification:** Enter the name of entry road.
- **Entry Road Width (m):** Enter the width of the entry road in meter.
- **Exit Road Type:** Select the type of exit road from the site.
- **Exit Road Name:** Enter the name of the exit road.
- **Exit Road Width:** Enter the width of the exit road in meter.

NOC Blocks of
Buildings with
Strategic-Tactical-
Operational
intelligence
Infrastructure
and/or Data
Management
influencers

NOC related details for a building

KSFES - Portal Application

- **Setback as shown in Plan (m):** Here provide the setback details of the plot as shown in plan.
 - **Front:** Enter the setback area in front of the proposed building.
 - **Rear:** Enter the setback area in the rear side of the proposed building.
 - **Left:** Enter the setback area in the left side of the proposed building.

 - **Right:** Enter the setback area in the right side of the proposed building.
 - **No. of Floors:** Enter the number of floors in the proposed building.
 - **Height of the Building (m):** Enter the height of the building in meter.
 - **Total Built-Up Area (sqm):** Enter the total built up area of the building in square meter.
 - **Provided Parking for Two Wheelers:** Enter the number of two wheelers for which parking is provided.
 - **Provided Parking for Four Wheelers:** Enter the number of four wheelers for which parking is provided.

NOC Blocks of Buildings with Strategic-Tactical-Operational intelligence Infrastructure and/or Data Management influencers

NOC related details for a building

KSFES - Portal Application

- **FAR Details (Proposed):** Specifies the proposed floor area ratio details.
 - **Permissible:** Enter the permissible FAR.
 - **Premium:** Enter the premium FAR.
 - **TDR:** Enter proposed Transfer of Development Rights details.
- **Site Condition:** Specifies the existing site condition.
 - **Water:** Here provide the source of water.
 - **Well:** Choose this option, if the source of water is well.
 - **BWSSB:** Choose this option, if the source of water is Bangalore Water Supply and Sewerage Board.
 - **Power:** Here provide the source of power.
 - **KPTCL:** Choose this option, if the source of power is Karnataka Power Transmission Corporation Limited.
 - **Electricity HT/LT:** Select whether electricity facility available or not.
 - **Future Connected Analytics (FCA) related active deployment** of Planned Road signs/Relatedly Live Screens/Billboards/ Hoardings/Signages, where these views or insights can guide any FESA service or SAR experience

NOC Blocks of Buildings with Strategic-Tactical-Operational intelligence Infrastructure and/or Data Management influencers



Fire Prevention Month

BE ALERT, DO NOT GET HURT

First Aid and Fire Safety Responsiveness

(First Aid and Fire Safety responsiveness)

i. An Introduction to the unit

What is First-Aid?

Measures to be taken immediately after an accident not with the idea to cure, or to replace services offered by the medical community but to prevent further harm from happening.

Main objectives of First-Aid

- (1) Protect and preserve life
- (2) Prevent afflicted person's condition from worsening
- (3) Promote well-being and recovery

(First Aid and Fire Safety responsiveness)

ii. The Key Learning of the unit

Goals of First-Aid

- (1) The immediate priority being to restore and maintain the vital functions of the injured person via certain steps for basic life support
 - (a) Ensuring the AIRWAY is open so that the injured person's body gets a proper supply of oxygen
 - (b) Enabling and ensuring BREATHING so that oxygen passes through lungs into the blood stream
 - (c) Helping and ensuring CIRCULATION where there must be circulation of blood to all parts of the body, so that there is sufficient supply of blood and oxygen
 - (d) First aid assistance on-road is more related to losing consciousness or fainting, burns or vehicle fire incidences, electrocution, bleeding from cuts, wounds, and injuries, fracture symptoms, unforeseen poisoning incidences, preparation and equipping of a first aid kit in vehicles

First Aid and Fire Safety responsiveness

iv. The Social Responsive Involvement for the unit

Simple 5 step Action Plan

It is necessary to check if the injured has any life-threatening conditions, where the plan of action includes the following steps:

- (a) Check for further DANGER at location or spot, if so, then move the injured person away carefully
- (b) Check for RESPONSE, shake gently, if conscious check for injuries
- (c) Check AIRWAYS to see if they are blocked, clear any loose material in mouth
- (d) Check for BREATHING by looking for chest rise and fall, or by listening to breathing sounds, or by feeling breath on cheeks or hand. If there is no breathing, roll injured person on back with face upwards. Tilt head. Loosen and separate jaws to open airway. Give mouth to mouth resuscitation.

If there is breathing, place injured person in stable position (sometimes a stable side position is preferred) and check for injuries.

- (e) Check CIRCULATION, feel pulse in groove beside Adam's apple.

If there is a pulse, if needed perform mouth to mouth breathing For children: 20 breaths per minute by puffing and blowing gently For adults: 12 to 15 breaths per minute by blowing fully

If there is no pulse, perform Cardio Pulmonary Resuscitation (CPR). As this needs skill and training, ensure one who is trained does this.

First Aid and Fire Safety responsiveness

v. The expected Responses reported for the unit and it's enabling of road safety

(A) Fainting or losing consciousness

- Loss of consciousness in times of disasters has many causes associated with it i.e.
 - (1) Trauma caused by severe distress
 - (2) Fainting on account of fatigue or lack of oxygen
 - (3) Head injury, spinal cord injury

First-Aid (Do's)

1. Under circumstances, prevent person from falling
2. Lay the person on back facing upwards
3. Tilt head back
4. Keep arms at right angles to body
5. Raise legs 8-12 inches to promote blood flow to brain
6. Pinch the person gently to check for response
7. Examine body for injuries
8. Keep a record of condition of person to help medical assistance

First Aid and Fire Safety responsiveness

v. The expected Responses reported for the unit and it's enabling of road safety

(A) (Continued) Fainting or losing consciousness First-Aid (Do not's)

1. Do not crowd around the injured person
2. Do not allow the person to get up and move around immediately on regaining consciousness
3. Do not give water or juice to the person as soon as he or she regains consciousness

(B) Bleeding from cuts, wounds or punctures First-Aid (Do's)

1. Wear gloves (if possible) while attending to the injured person
2. Try to stop bleeding by elevating injured part or by applying pressure. Handle
 - with care if fracture is suspected
3. Bandage the injured area to stop bleeding and to prevent infection of wound
4. Give a tetanus injection if required
5. If the injured person loses consciousness, apply **5 step Action Plan**

First Aid and Fire Safety responsiveness

v. The expected Responses reported for the unit and it's enabling of road safety

(C) Burns

• First-Aid (Do's)

1. Wrap with blankets or non-inflammable material to put off fire
2. Wear gloves (if possible) while attending to the injured person
3. Cool the burn – immediately apply cloth soaked in cool water for at least 5 minutes till pain subsides
4. Cover the burn – cover the burnt area with dry sterile gauge bandage but do
 - not use cotton or any other fluffy material
5. Give an over-the-counter pain reliever
6. Take off clothes or jewelry covering burn area before swelling or blisters appear

• First-Aid (Do not's)

1. Do not remove cloth stuck to burn area
2. Do not wash burn area under extreme water pressure
3. Do not apply oil or ice on affected area
4. Do not attempt to puncture or break blisters

First Aid and Fire Safety responsiveness

v. The expected Responses reported for the unit and it's enabling of road safety

(D) Electrocution First-Aid (Do's)

1. Cut off the power supply
 2. Move the person away from source or spot using a non-conductive material
 3. Check for breathing, carry out **5 step Action Plan** or **CPR** as needed
 4. Cover the affected area with a clean dressing
 5. Arrange for further medical assistance as needed
-
- **First-Aid (Do not's)**
6. Do not touch or attempt to move person without shutting off power supply
 7. Do not move person away from spot without making arrangements for non- conductive material to help do this
 8. While attending to person do not touch any non-insulated wire

First Aid and Fire Safety responsiveness

v. The expected Responses reported for the unit and it's enabling of road safety

(E) Fractures Symptoms

1. Check for pain at or near site of injury (which increases with movement)
2. Check gently if movement is possible (if there is a fracture, movement will be difficult, not possible or painful)
3. Check for swelling around injured part, where later there may be bruising or discoloration
4. Check for deformity at site of fracture
5. Check if injured person is in a state of shock

• First-Aid (Do's)

1. If there is bleeding, control bleeding before immobilizing site of fracture
2. Immobilize site of fracture
3. Check if injured person is in a state of shock
4. Revive the injured person using 5 step Action Plan
5. Place ice-pack on affected area to reduce pain and swelling
6. Provide proper padding to affected area before shifting to hospital etc

First Aid and Fire Safety responsiveness

v. The expected Responses reported for the unit and it's enabling of road safety

(E) (Continued) Fractures First-Aid (Do not's)

1. Do not move the injured person without support
2. Do not ask injured person to move independently
3. Do not move joints above or below the site of fracture
4. Do not massage the affected area
5. Do not force bones back into the wound

• Remember the principles of RICE

1. REST- Give rest to injured person and injured part
2. ICE- Apply ice on injured part
3. COMPRESS - Wrap the injured area with crepe bandage
4. ELEVATE - Elevate injured area above level of heart

First Aid and Fire Safety responsiveness

v. The expected Responses reported for the unit and it's enabling of road safety

(F) Poisoning Types of poisoning

- (1) Ingested poisons (orally)
- (2) Inhaled poisons (through lungs by inhaling industrial gases, flames from fire, chemical vapors etc)
- (3) Absorbed poisons (through skin via contact with poisonous sprays)

• Signs and symptoms

1. Bluish lips
2. Difficulty in breathing, chest pain
3. Cough
4. Abdominal pain, loose motions
5. Dizziness
6. Double vision
7. Confusion
8. Fever

First Aid and Fire Safety responsiveness

v. **The expected Responses reported for the unit and it's enabling of road safety**

(F) (Continued) Poisoning

• First-Aid (Do's)

1. Check airway, breathing and circulation, proceed with 5-step Action Plan
2. Check for foreign matter in mouth, if found remove immediately
3. Prevent injured person from entering a state of shock
4. Dilute poison by giving milk or water
5. Observe color and amount of vomit
6. Monitor vital signs
7. Arrange for immediate medical assistance

• First-Aid (Do not's)

8. Do not induce vomiting unless type of poisoning known
9. Do not panic

First Aid and Fire Safety responsiveness

v. The expected Responses reported for the unit and it's enabling of road safety

• First-Aid Kit

(A) Medicinal items

1. Antiseptics, disinfectants
2. Antihistamine cream
3. Tube of petroleum jelly
4. Analgesics, Pain relievers
5. Paracetamol
6. Antacid
7. Life saving drugs, Oral Rehydration solution (ORS) packets
8. Anti-diarrhoea medication

(B) Bandages

1. Sterile dressing, cotton wool, adhesives,
2. Triangular bandages, band-aids
3. Crepe bandages
4. Make-shift stretchers, crutches, splints

First Aid and Fire Safety responsiveness

v. **The expected Responses reported for the unit and it's enabling of road safety**

(Continued) First-Aid Kit

(C) Other items

1. Thermometer
2. Sterilized gloves, Latex gloves
3. Towels, napkins
4. Assorted sizes of safety pins
5. Tweezers, needles, syringes, trays
6. Anti-germicide soaps, cleansing soaps
7. Scissors
8. Torches
9. Disposable bags, garbage bags

First Aid and Fire Safety responsiveness

v. The expected Responses reported for the unit and it's enabling of road safety

Added notes:

Fire safety risk assessment: 5-step checklist (accessible)

- Fire hazards.
- People at risk.
- Evaluate and act.
- Record, plan and train.
- Review.

Important Considerations:

•Fuel System Leaks:

•Leaks in the fuel system are a common cause of vehicle fires, so it's crucial to address them quickly.

•Time is of the Essence:

•Prompt action is essential for both drivers and first responders to minimize the damage and risks associated with vehicle fires.

What is the basic principle of fire safety?

Identifying and eliminating potential sources of ignition is crucial in preventing fires.

Common sources include faulty electrical wiring, open flames, or overheated machinery.

Ensuring proper maintenance and inspection can significantly reduce these risks.

First Aid and Fire Safety responsiveness

v. The expected Responses reported for the unit and it's enabling of road safety

Added notes:

On-road responsiveness to vehicle fires involves immediate actions like stopping safely, turning off the engine, and calling for help.

Firefighters prioritize blocking and safe vehicle positioning to ensure their safety and effective fire suppression. Knowing your vehicle's bonnet catch location and how to use an extinguisher can be crucial for tackling a small engine fire.

First Aid and Fire Safety responsiveness

v. The expected Responses reported for the unit and it's enabling of road safety

Added notes:

For Drivers:

- 1. Safety First:** Pull over to a safe location, away from traffic, and turn off the engine.
- 2. Call for Help:** Immediately contact emergency services to report the fire.
- 3. If a small engine fire:** Know where your bonnet catch is, and if it's safe to lift the bonnet, you can try using an extinguisher. Otherwise, stay away and let professionals handle it.
- 4. Stay Safe:** Don't try to fight a large fire yourself. Focus on getting to safety and waiting for help.
- 5. Engage Emergency Brake:** Help prevent the vehicle from rolling, especially if the fire has affected the brakes

First Aid and Fire Safety responsiveness

v. The expected Responses reported for the unit and it's enabling of road safety

Added notes:

For First Responders (Firefighters)::

1. 1. Safe Positioning:

2. Prioritize safe and secure positioning for fire apparatus and personnel, considering uphill and upwind locations.

3. 2. High Visibility:

4. Firefighters should wear retro-reflective material during fire suppression and high visibility garments when not directly exposed to fire.

5. 3. Distance:

6. Maintain a safe distance from the burning vehicle.

7. 4. Fire Suppression:

8. Firefighters will use various techniques to extinguish the fire, potentially including using water, foam, or other extinguishing agents.